

Smart Cloud-based Digital Signage Solutions

Immersive Experience and Easy Management

- Value Proposition
- Product Portfolio
- Software
- Market Solutions
- Selection Guide



Enabling an Intelligent Planet



IoT Solutions Alliance
Premier



Entering a New Era of Digital Signage

Digital signage has evolved into an interactive and personalized communication tool. It is now a vital link to connect advertisers with viewers for a more direct engagement and experience. Advantech cloud-based digital signage solution covers most business and environmental needs, from single stores to central management, commercial to industrial applications. All systems come bundled with content management, device monitoring, and content security software, and can connect with WiFi, 3G or LTE modules for a flexible range of communication possibilities.



Diversified Product Portfolio

- 2-6 multiple displays
- FHD/UHD
- x86 & ARM based solutions



Reliable Design

- Cables design
- Optimized thermal systems
- Longevity support



Flexible Customization

- Strong technical know-how
- Timely delivery
- Global support



Rich Connectivity

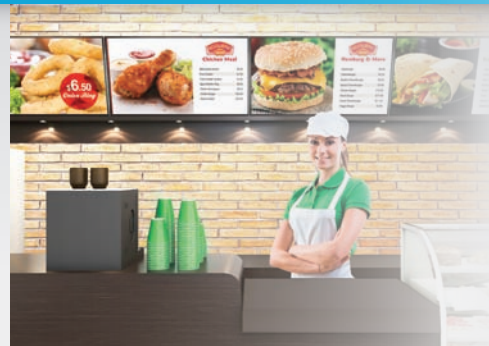
- WiFi/3G/4G/LTE
- Touchscreens, RFID, cameras

Empower Your Most Innovative Solutions



Retail

- Video walls
- Interactive digital signage
- Multimedia kiosks



Quick Service Restaurant

- Digital menu boards
- Self-ordering kiosks
- In-store signage



Entry Level Series



DS-370
Intel Celeron J1900



DS-100
Quad-core ARM Cortex-A53



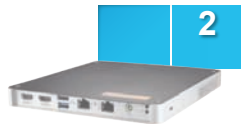
Ultra Slim Series



DS-081(Embedded)
6th Gen. Intel Core i3/i5



DS-081(Commercial)
6th Gen. Intel Core i5



DS-082
7th Gen. Intel Core i3/i5/i7



Multi-display Series



DS-780
6th Gen. Intel Core i3/i5/i7 / Celeron



DS-570
Intel Celeron J1900



DS-980
6th Gen. Intel Core i3/i5/i7 / Celeron



OPS Series



DS-270
Intel Celeron J1900

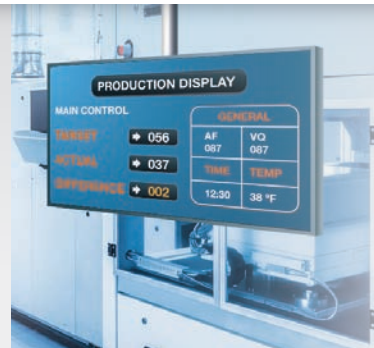


DS-280
6th Gen. Intel Core i3/i5/i7
7th Gen. Intel Core i



Transportation

- Passenger information
- Advertisements
- Self-service kiosks



Data Visualization

- Production line / inventory signage
- Digital bulletin board
- Control centers

Streamline your Signage Management

Advantech's digital signage solutions bring all the core signage elements together including reliable hardware, and full software services such as embedded OS, multimedia management, remote device monitoring and management, system security and recovery to easy signage deployment.

Multimedia Management

- Content editing, dispatch, and scheduling
- Supports up to 500 players
- Supports 30+ media formats
- Preloads diverse layout templates



WISE-PaaS/SignageCMS

Embedded OS

- Multiple OS support
- Custom OS image
- Embedded lockdown utility





Remote Device Monitoring and Management



- KVM, remote on/off
- HW monitoring: CPU, temperature, fan speed, voltage
- Whitelist protection **McAfee**
- Timely backup and recovery **Acronis**

WISE-PaaS/RMM



Customized BIOS Support

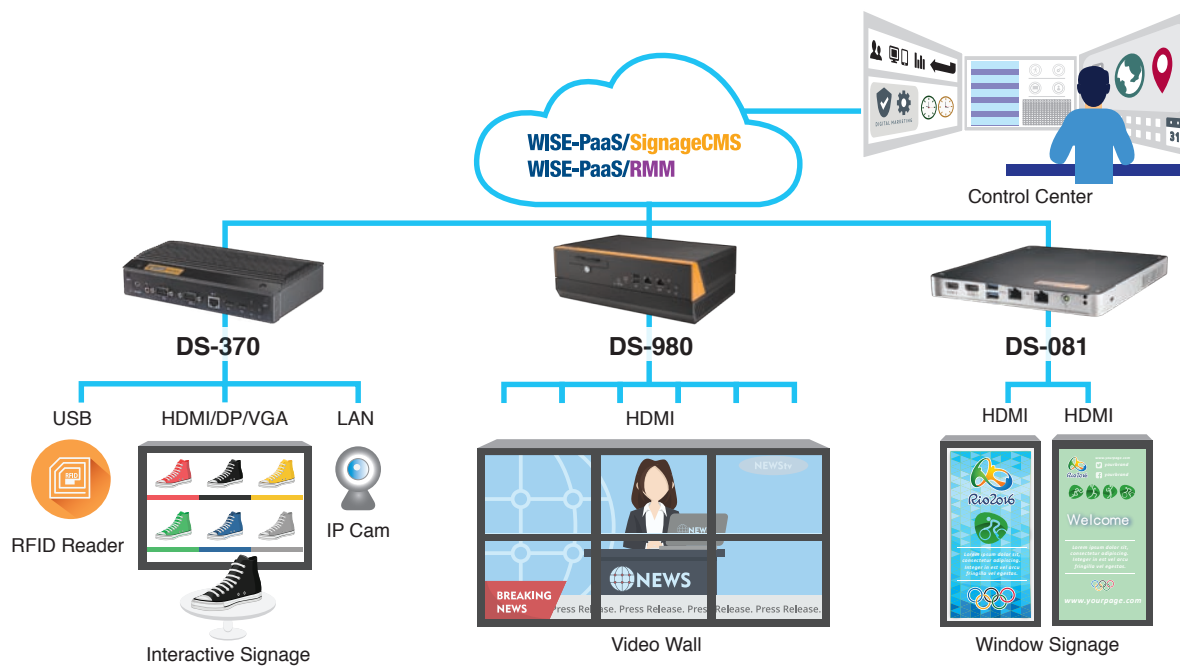


- User-centric functions
- Customer logo and default password
- BIOS customization
- Expert consulting



Retail

Advantech offers a comprehensive suite of digital signage solutions that enable retailers to increase brand awareness, customer engagement, and revenue opportunities. Our solutions help deliver more personalized content and better engage customers with connection to devices such as RFID, touchscreens, cameras, and more.



Reinvigorate Brand Image with Digital Signage

A world leading cosmetic company previously used traditional poster light boxes to promote its brand in various cities throughout Asia. Manually updating every light box was extremely time-consuming. Consequently, they decided to deploy digital signage in an effort to enhance the operational efficiency of multi-channel communication. Digital signage systems would be deployed in its 30-40 brand counters, sales outlets, and headquarters in Asia.

Benefit

- Multiple offerings from single display to multi-display video wall
- Fanless, industrial grade design with longevity support
- Centralized management platform
- Prompt and simultaneous broadcasted content update
- Efficient and enhanced digital communication



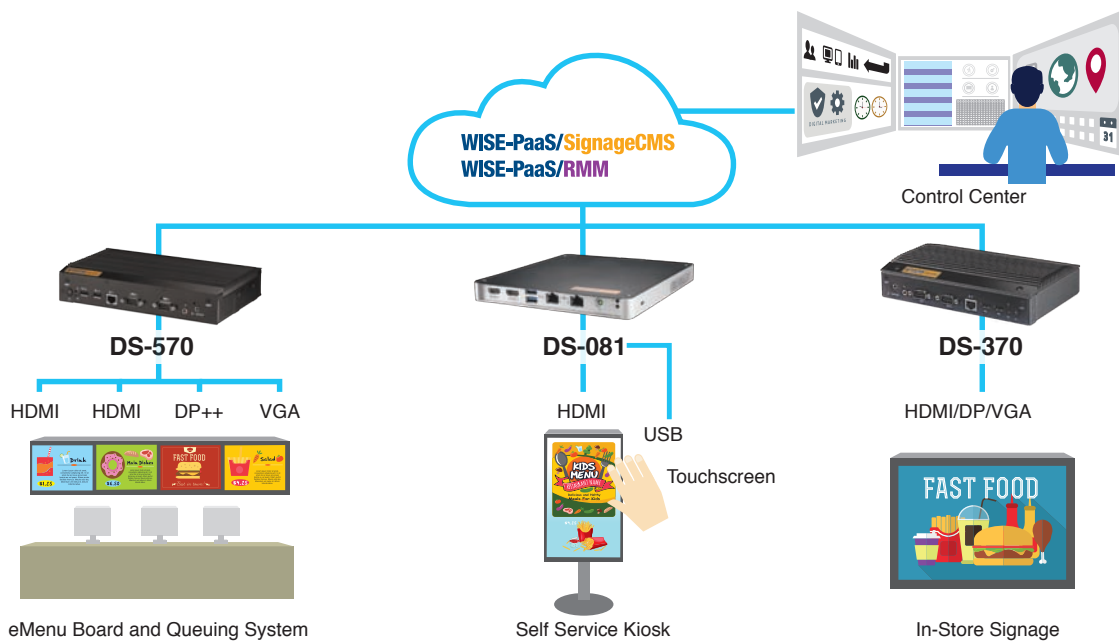
DS-081



DS-980

Quick Service Restaurant

Advantech provides a wide range of digital signage solutions for most quick service restaurants and businesses. Advantech digital signage solutions support multiple display playback and allow users to directly edit and dispatch up-to-date menus and promotions remotely to chain restaurants.



Subway Boosts Customer Experience with Digital Signage

A customer who established 16 Subway franchise stores in Thailand found that updating the paper-based menu boards for discount promotions was time consuming and challenging so they decided to deploy a new digital signage solution. And because they didn't want to go through an expensive upgrade shortly after deployment, they needed to ensure that their hardware investment would support future needs and functionality.

Benefit

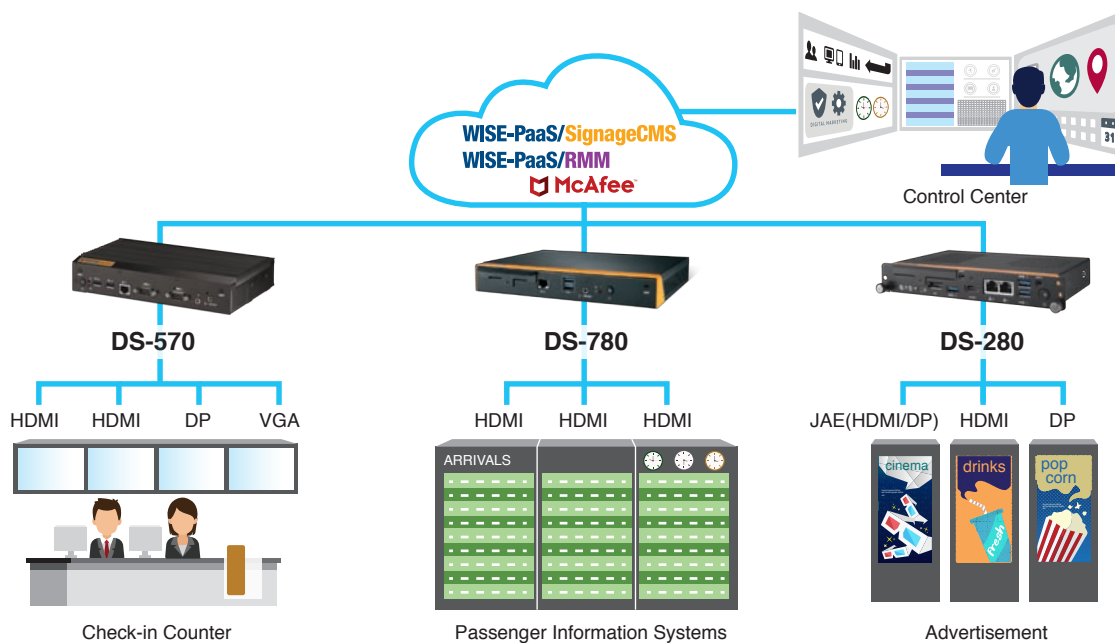
- Supports up to 4 display outputs
- An integrated HW and SW solution for a lower total cost of ownership
- Remote content management and easy installation
- Increased marketing effectiveness and customer engagement



DS-570

Transportation

Digital signage is used to provide passengers with real-time information, digital advertising, and self services at transportation hubs such as airports, railway and bus stations. Since digital signage systems are installed in public spaces, content security is important. Advantech provides secured digital signage solutions which can drive multiple displays, support live streaming, and provide emergency messaging.



Enhancing China's Flight Information Display Systems (FIDS)

FIDS plays an important role in assisting air passengers during boarding. The system needs to be high performance and highly reliable and supports 24/7 operation. During the last two years, China's main international airports such as Guangzhou Baiyun International Airport, Shanghai Pudong International Airport, and Zhengzhou Xinzheng International Airport, gradually upgraded their FIDS using Advantech digital signage solutions.

Benefit

- Multi-display capability and high performance
- Industrial grade and quality
- Easy installation and removal for maintenance
- Integrated remote management software
- McAfee whitelist protection



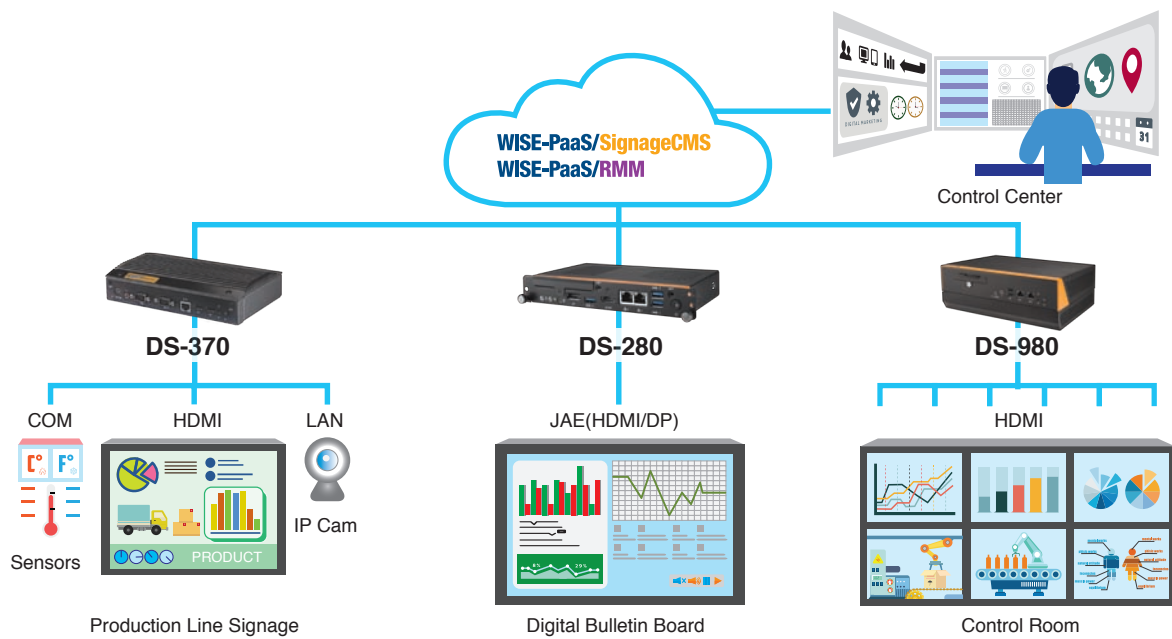
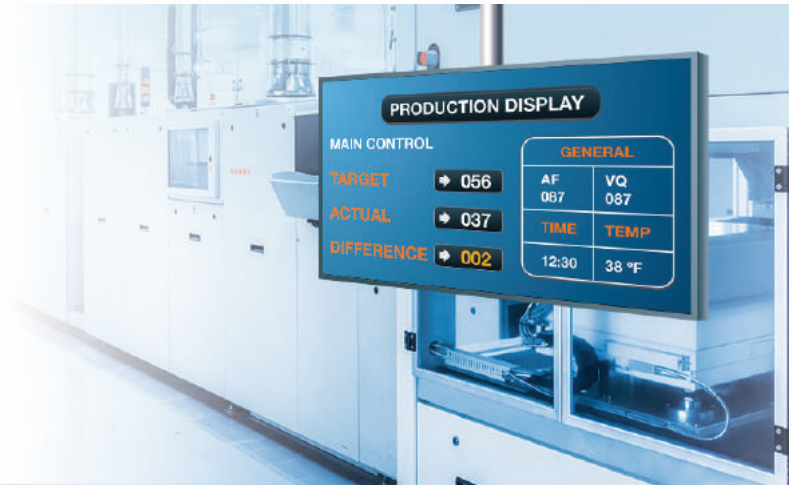
DS-780



DS-570

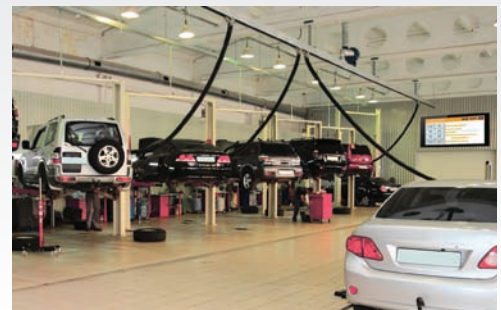
Data Visualization

In the Industry 4.0 model, all machines are connected and digital signage plays an important role in displaying critical production line alerts, plant metrics, and inventory levels. They help streamline communication and reinforce safety information for any modern production operation. Advantech provides comprehensive digital signage solutions for industry located on the production floor and in control room.



Enhancing Maintenance Flow in Auto Maintenance Centers

A chain of automotive maintenance centers deployed a digital signage system to streamline its maintenance and enhance its communication with customers. Customers in the client lounge and lobby can watch on-screen displays as their cars progress through the service queue, meanwhile automotive mechanics in their workshops could see their work plotted on the scheduling dashboard display, and administrators could see the status of all the cars displayed on a status dashboard in the back office.



Benefit

- Fanless and cableless design for high reliability and stability
- FHD displays for high quality graphics
- Content management software for real-time information delivery
- Rich connectivity: IP camera, wireless



DS-370

Product Selection

▶ Entry Level Series

▶ Ultra Slim Series



Model Name		DS-100	DS-370	DS-080	DS-081	DS-082
Processor System	CPU	Dual ARM Cortex-A72 + Quad ARM Cortex-A53	Intel Celeron J1900	Intel Core i5-5350U Intel Celeron 3765U	Intel Core i5-6300U Intel Core i5-6200U Intel Core i3-6100U	Intel Core i7-7600U Intel Core i5-7300U Intel Core i5-7200U Intel Core i3-7100U
	BIOS	-	AMI uEFI 64 Mbit	AMI uEFI 128 Mbit	AMI uEFI 128 Mbit	AMI uEFI 128Mbit
	Chipset	-	Integrated in CPU	Integrated in CPU	Integrated in CPU	Integrated in CPU
Memory	Technology	LP-DDR3L-1066MHz	DDR3L 1333MHz	DDR3L 1600MHz	DDR4 2133MHz	DDR4 2133MHz
	Max. Capacity	2GB on board	8GB (4GB per SODIMM)	16GB (8GB per SODIMM)	32GB (16GB per SO-DIMM)	32GB (16GB per SO-DIMM)
	Socket	-	2 x 204-pin SODIMM	2 x 204-pin SODIMM	2 x 260-pin SODIMM	2 x 260-pin SODIMM
Display	Controller	-	CPU Integrated	CPU Integrated	CPU Integrated	CPU Integrated
	Graphic Engine	Mali-T860MP4	Intel HD Graphics	Intel HD 6000 (Core i5-5350U) Intel Integrated HD Graphics (Celeron 3765U)	Intel HD Graphics 520	Intel HD Graphics 620
	Graphic Memory	-	Shared system memory	Shared system memory	Shared system memory	Shared system memory
	Multiple Display	Dual	Dual	Dual	Dual	Dual
	Interface	HDMI 2.0 x1, HDMI 1.4 x1	HDMI x 1, DP** x1, VGA x1	HDMI 1.4 x 2	HDMI 1.4 x 2	HDMI 2.0 x 1; HDMI 1.4 x 1
Expansion Interface	Max. Resolution	4096 x 2304 @ 60Hz	2048 x 1280 @ 60Hz	3840 x 2160 @ 30Hz	4096 x 2304 @ 24Hz	4096 x 2304 @ 60Hz
	M.2	1	-	-	-	-
	Mini PCIe	-	2	1	1	1
	PCIe x16	-	-	-	-	-
Ethernet	Connector	RJ-45 x 2	RJ-45 x 2	RJ-45 x 2	RJ-45 x 2	RJ-45 x 2
Audio	Connector	1 (Line-out/Mic-in)	2 (SPDIF/ Line-out, Mic-in), supports Jack Sense	1 (SPDIF/ Line-out/ Mic-in), supports Jack Sense	1 (SPDIF/ Line-out/ Mic-in), supports Jack Sense	1 (SPDIF/ Line-out/ Mic-in), supports Jack Sense
WatchDog Timer		Yes	Yes	Yes	Yes	Yes
Storage	SATA	1x 16GB eMMC on board; 1x Micro SD card slot (for expansion)	1 x 2.5" SATA II HDD/SSD;	1 x 2.5" SATA III HDD/SSD	1 x 2.5" SATA III HDD/SSD	1 x 2.5" SATA III HDD/SSD
	mSATA	-	Yes, colay Mini PCIe	Yes, colay Mini PCIe	Yes, colay Mini PCIe	Yes, colay Mini PCIe
I/O	USB3.0	1	1	4	4	4
	USB2.0	1	3	-	-	-
	COM Port	1 (RS-232)	2 (RS-232)	1 (RS-232/422/485) or 2 (RS-422/485) with extension cable	1 x RS-232	1 (RS-232/422/485) or 2 (RS-422/485) with extension cable
Power	Power Supply	DC 12V input	DC 19V input	DC 19V input	DC 19V input	DC 19V input
Environment	Operational Temperature	-10 ~ 60°C (14 ~ 140°F) with 0.7m/s air flow	0 ~ 40°C (32 ~ 104° F) (w / HDD) 0 ~ 50°C (32 ~ 122° F) (w/SSD),with 0.7m/s air flow	0 ~ 40°C (32 ~ 104°F) (w / HDD) with 0.7m/s air flow	0 ~ 40°C (32 ~ 104°F) (w / HDD) with 0.7m/s air flow	0 ~ 40°C (32 ~ 104°F) (w / HDD) with 0.7m/s air flow
Physical Characteristics	Dimensions (L x W x H)	TBD	204 x 118.2 x 44.2 mm	180 x 190 x 19 mm	180 x 190 x 19 mm	180 x 190 x 19 mm
Operating System		Android 7.1, Linux Kernel 4.4	Microsoft Windows, Linux (Option)	Microsoft Windows, Linux (Option)	Microsoft Windows, Linux (Option)	Microsoft Windows, Linux (Option)
Certifications	EMC	CE, FCC Class B, CCC, BSMI	CE, FCC Class B, CCC, C-Tick, BSMI	CE, FCC Class B, CCC, BSMI	CE, FCC Class B, CCC, BSMI	CE, FCC Class B, CCC, BSMI
	Safety	UL, CB, CCC, BSMI	UL, CB, CCC, BSMI	UL, CB, CCC, BSMI	UL, CB, CCC, BSMI	UL, CB, CCC, BSMI

WISE-PaaS/SignageCMS

Multimedia Management Software

Media Type	Image, Video, Scrolling Text, Bulletin Board, Time, Flash, PowerPoint, Webpage
Program Management	Customize Program Layouts, Program Preview, Urgent Cast
Output	HD/Full HD Output, Portrait/Landscape Display, Multi-screen Output, Audio Output
Schedule Management	Daily/Weekly/Monthly Schedule, Appointment Dispatch, Dispatch Records
Remote Player Management	Unlimited Multipoint Dispatching, Player Group Setting Remote Power on/off (Intel AMT), Remote Software Upgrade, Auto Shutdown Setting, Hardware Monitoring, Software Monitoring, Screenshot Real-time Monitoring
System Management	Authorization Setting, Simultaneous Editing, System backup/ Recovery, Resume Download, Differential Download, App Monitoring
Operating System	Server: Windows 7 or above Windows Server 2008 or above Client: Windows 7 (Embedded/POSReady)

▶ Multi-Display Series



▶ OPS Series



DS-570	DS-780	DS-980	DS-270	DS-280
Intel Celeron J1900	Intel Core i7-6600U Intel Core i5-6300U Intel Core i3-6100U Intel Celeron-3955U	Intel Core i7-6700TE Intel Core i5-6500TE Intel Core i3-6100TE	Intel Celeron J1900	Intel Core i7-6822EQ Intel Core i5-7442EQ Intel Core i5-6442EQ Intel Core i3-7102EQ Intel Core i3-6102EQ
AMI uEFI 64 Mbit	AMI uEFI 128 Mbit	AMI uEFI 128 Mbit	AMI uEFI 64 Mbit	AMI uEFI 128 Mbit
Integrated in CPU	Integrated in CPU	Intel Q170	Integrated in CPU	Intel QM170
DDR3L 1333MHz	DDR4 2133MHz	DDR4 2133MHz	DDR3L 1333MHz	DDR4 2133MHz
8GB (4GB per SODIMM)	32GB (16GB per SODIMM)	32GB (16GB per SODIMM)	8GB (4GB per SODIMM)	32GB (16GB per SODIMM)
2 x 204-pin SODIMM	2 x 260-pin SODIMM	2 x 260-pin SODIMM	2 x 204-pin SODIMM	2 x 260-pin SODIMM
NVIDIA GeForce GT730M	CPU Integrated	CPU Integrated	NVIDIA GeForce GT730M	CPU Integrated
-	Intel HD Graphics 520/510	Intel HD Graphics 530	-	Intel HD Graphics 630/530
1 GB (On board memory)	Shared System Memory	Shared system memory	1GB (On board memory)	Shared system memory
Four	Triple	Triple+ (up to six with graphic card)	Dual	Triple
HDMI 1.4 x 2, DP++ x 1, VGA x 1	HDMI 2.0 x 1, HDMI 1.4 x 2	HDMI 2.0 x 1, HDMI 1.4 x 2	JAE TX25 80-pin x 1, HDMI 1.4 x 1	JAE TX25 80-pin x 1, HDMI 2.0 x 1, DP x 1
3840 x 2160 @ 30Hz	4096 x 2160 @ 60Hz	4096 x 2160 @ 60Hz	3840 x 2160 @ 30Hz	4096 x 2304 @ 60Hz
-	1 (2230/1630 E-Key)	1 (2230 E key)	-	-
2	1	1	1	1
-	-	1	-	-
RJ-45 x 2	RJ-45 x 2	RJ-45 x 2	RJ-45 x 1	RJ-45 x 2
2 (SPDIF/ Line-out, Mic-in), supports Jack Sense	1 (SPDIF/ Line-out/ Mic-in), supports Jack Sense	2 (SPDIF/ Line-out, Mic-in), supports Jack Sense	1 (Line-out), supports Jack Sense	1 (Line-out), supports Jack Sense
Yes	Yes	Yes	Yes	Yes
1 x 2.5" SATA II HDD/ SSD	1 x 2.5" SATA III HDD/SSD	1 x 2.5" SATA III HDD/ SSD (top); 1 x 2.5" SATA III SSD (bottom), supports RAID 0/1	1 x 2.5" SATAIII HDD/SSD	1 x 2.5" SATA III HDD/ SSD
Yes, colay Mini PCIe	Yes, colay Mini PCIe	Yes, colay Mini PCIe	Yes, colay Mini PCIe	Yes, colay Mini PCIe
1	4	4	2	3
3	-	2	-	-
2 (RS-232) or 1 (RS-232/422/485) + 1 (RS-232) (by option)	1 (RS-232)	1 (RS-232)/ 2 (RS-485 & 422 with extension cable)	-	-
DC 19V input	DC 19V input	DC 12V input	DC 12V-24V input (via OPS connector)	DC 12V-19V input (via OPS connector)
0 ~ 40°C (32 ~ 104° F) (w/ HDD) 0 ~ 65°C (32 ~ 149°F) (w/ SSD) with 0.7m/s air flow	0 ~ 40°C (32 ~ 104° F) with 0.7m/s air flow	0 ~ 40°C (32 ~ 104°F)	0 ~ 40°C (32~104°F) (w/ HDD) ; 0 ~ 50°C (32~122° F) (w/ SSD)	0 ~ 40°C (32 ~104°F) (w/ HDD); 0 ~ 50°C (32 ~122°F) (w/ SSD)
220 x 150 x 44.2 mm	235 x 175 x 35 mm	267.6 x 205 x 88 mm	200 x 119 x 30 mm	200 x 119 x 30 mm
Microsoft Windows, Linux (Option)	Microsoft Windows, Linux (Option)	Microsoft Windows, Linux (Option)	Microsoft Windows, Linux (Option)	Microsoft Windows, Linux (Option)
CE, FCC Class B, CCC, BSMI	CE, FCC Class B, CCC, BSMI	CE, FCC Class B, CCC, BSMI	CE, FCC Class B, CCC, BSMI	CE, FCC Class B, CCC, BSMI
UL, CB, CCC, BSMI, LVD	UL, CB, CCC, BSMI	UL, CB, CCC, BSMI	UL, CB, CCC	UL, CB, CCC

WISE-PaaS/RMM

Device Monitoring and Management

Device Management	IPC Device Management, Group View, Map View, HW Status Monitoring & Rule Setting, SW Process Monitoring & Rule Setting, Data Auto Report, Dashboard
Remote KVM	Remote KVM, Terminal Mode, Intel AMT Integration , Screenshot
Power Management	Remote On/Off, Hibernate, Power On/Off Scheduling
System Protection	McAfee White List Protection
System Recovery	Acronis Backup/Recovery, Backup/Recovery Scheduling, Hot-Key Recovery
Notification Center	Event Log, Email Notification, SMS Notification
Management Interface	Account/Role management, Mobile Mode, Web-Based Console
Others	RESTful API Web Service



WISE-PaaS/SignageCMS

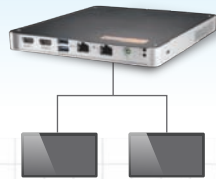
WISE-PaaS/RMM

Entry Level Series



2 Displays

Ultra Slim Series



2 4K/FHD Displays

Multi-display Series



3-6 Displays

OPS Series



2-3 Displays

Regional Service & Customization Centers

China Kunshan
86-512-5777-5666

Taiwan Taipei
886-2-2792-7818

Netherlands Eindhoven
31-40-267-7000

Poland Warsaw
00800-2426-8080

USA Milpitas, CA
1-408-519-3898

Worldwide Offices

Greater China

China
Toll Free 800-810-0345
Beijing 86-10-6298-4346
Shanghai 86-21-3632-1616
Shenzhen 86-755-8212-4222
Chengdu 86-28-8545-0198
Hong Kong 852-2720-5118

Taiwan
Toll Free 0800-777-111
Neihu 886-2-2792-7818
Xindian 886-2-2218-4567
Taichung 886-4-2329-0371
Kaohsiung 886-7-229-3600

Middle East and Africa

Israel 072-2410527

Asia

Japan
Toll Free 0800-500-1055
Tokyo 81-3-6802-1021
Osaka 81-6-6267-1887
Nagoya 81-0800-500-1055

Korea
Toll Free 080-363-9494
Seoul 82-2-3663-9494

Singapore
Singapore 65-6442-1000

Malaysia
Kuala Lumpur 60-3-7725-4188
Penang 60-4-537-9188

Thailand
Bangkok 66-2-248-3140

India
Bangalore 91-80-2545-0206
Pune 91-20-3948-2075

Indonesia
Jakarta 62-21-751-1939

Australia
Toll Free 1300-308-531
Melbourne 61-3-9797-0100

Europe

Germany
Toll Free 00800-2426-8080/81
Munich 49-89-12599-0
Düsseldorf 49-2103-97-855-0

France
Paris 33-1-4119-4666

Italy
Milano 39-02-9544-961

Benelux & Nordics
Breda 31-76-523-3100

UK
Newcastle 44-0-191-262-4844
London 44-0-870-493-1433

Poland
Warsaw 48-22-31-51-100

Russia
Moscow 8-800-555-01-50
St. Petersburg 8-800-555-81-20

Czech Republic
Ústí nad Orlicí 420-465-521-020

Ireland
Oranmore 353-91-792444

Americas

North America
Toll Free 1-888-576-9668
Cincinnati 1-513-742-8895
Milpitas 1-408-519-3898
Irvine 1-949-420-2500
Ottawa 1-815-434-8731

Brazil
Toll Free 0800-770-5355
São Paulo 55-11-5592-5355

Mexico
Toll Free 1-800-467-2415
Mexico City 52-55-6275-2727



Enabling an Intelligent Planet

www.advantech.com

Please verify specifications before ordering. This guide is intended for reference purposes only. All product specifications are subject to change without notice. No part of this publication may be reproduced in any form or by any means, electronic, photocopying, recording or otherwise, without prior written permission of the publisher. All brand and product names are trademarks or registered trademarks of their respective companies. © Advantech Co., Ltd. 2017